



शिक्षित | सक्षम | सशक्त

प्रेम रतन शाह मेमोरियल

राजकीय बालिका उच्च माध्यमिक विद्यालय

कालंद्री, सिरौही



THE KALANDRI VILLAGE SCHOOL

R | K | T | R | U | S | T

EDUCATE . EMPOWER

THE VISION

We envision the school to become the hub of educational and vocational studies in Kalandri transcending beyond just the school curriculum.

To emerge as a premise for activities for education and up-skilling of people in the village including women and men and communities as a whole.

The new school is envisaged to be built as a world class campus thoughtfully designed and nurtured, to become an aspirational centre of modern education.

R | K | T | R | U | S | T
E D U C A T E . E M P O W E R

OUR DREAM SCHOOL



The design concept for Premratan Shah Government
Girl's School aspires to create a

‘Nurturing and Empowering’

environment that fosters dignity, personal growth,
independent self-learning, and community
integration.

THE DREAM PLAN

- To be built as a world class campus thoughtfully designed with best in class references for infrastructure, administration and facilities along with education.
- House almost 1000 students over time and become an aspirational centre of education for girls in Kalandri village as well as neighbouring areas.
- There will be professionals and educators who will be taking classes and guest lectures in global subjects and teach kids in this school in open classes.
- This school will also be the only school in a large proximity that will have a dedicated play area, sports field, and an auditorium suited to host events not only for the school but also at district level for private and government organizations.
- Well maintained, well ventilated, well lit and bright classrooms with sufficient space for children to spend happy and meaningful time in the school campus.
- After school support with assisted tuitions and technology enabled classes for subjects and vocational training.

OUR DREAM SCHOOL



Spacious, cool, well ventilated and green campus with playground, and other recreational spaces for children to enjoy their learning experience



Well planned and properly administrated building area and blocks for safety and cleanliness

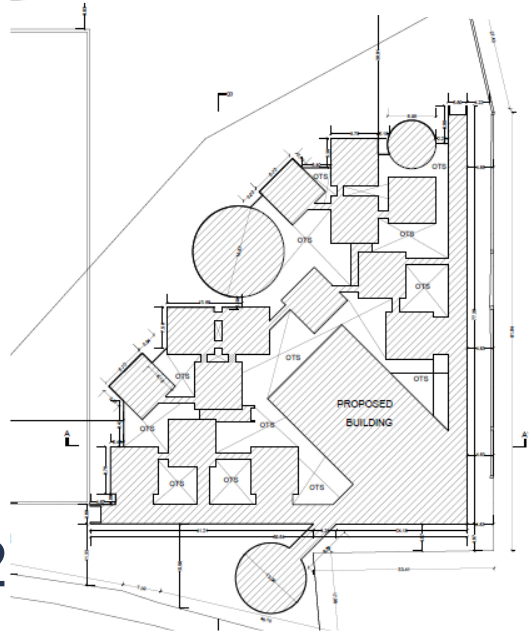


1

Central to the design are shaded streets and courts of varied scales, strategically placed throughout the campus to encourage play, group activities, outdoor learning, and informal social interactions. These courts are designed to double as community spaces after school hours, linking the school with the local village and providing much-needed infrastructure for

Each classroom is treated as an independent entity, free to assume its space and direction within a protected environment. This results in an extroverted space with open-ended circulation. Instead of rigid and deterministic corridors, a network of interconnected spaces promotes adventure and curiosity, creating a sense of play and collaborative learning opportunities. Students can discover new learning spaces, engage with peers, and access different resources organically, fostering a dynamic and student-driven campus experience

2





3

Environmental sustainability is integral to the design engineering. The school incorporates passive cooling techniques, shaded outdoor spaces, on-site CSEB (Compressed Stabilized Earth Blocks) production, rainwater harvesting, and solar energy solutions. These features ensure that the school minimizes its ecological footprint while teaching students about responsible living.


THE PROJECT

- Designed to suit the climate, culture and space where it is built.
Functional, energy efficient, sustainable in resources with a local context either in building style, shapes and spaces, or material etc.
- Planned based on world class practises and amenities which can be brought here as space and design elements.
- Comfortable for people who work and study, with good light, ventilation, air flow, cooling, hygiene and waste management etc
- Easy to maintain and keep, and easy to manage plumbing, electricity etc.
- Integration of any interesting school and education related plans/concepts that exist globally as mentally stimulating and engaging elements for children.
- Dedicated spaces for a Science Park, a Civic Sense Development area, a happy and engaging space for primary and kindergarten children.
- A lunch hall and a food preparation kitchen, and associated waste disposal or composting system.



THE CONCEPT OF DESIGN AND ARCHITECTURE

A sustainable indigenous approach

- Eco-friendly mud blocks being used – low pollution no burning, low carbon footprint and long lasting low maintenance
 - Solar energy being used for electricity needs
 - Rain water harvesting and waste water management systems
 - Plantation of local trees for better surroundings being fed by internal water
 - Compost and garbage disposal ingenious techniques
 - Well ventilated with strategic vents planned based on wind directions
 - Lot of natural shade due to design planned based on sun light mapping
 - Exhaust for warm air to keep the school cool planned with natural energy
 - Thoughtfully designed corridors for play and recreation
- 

THE SCHOOL AT YOUR DOORSTEP

RK Trust & Temple of Learning present...



‘HIKAVARI GAADI’



The moving school equipped with a TV screen, fans, blackboard and seating for about 40 kids is an effort to take education to the door step of every person who wants to learn. With a young team of teachers trained to assist children from the 1st standard upto 12th standard and latest education assistance by AI and Chat GPT and special subject applicatons.

Kalandri village is all set to leap beyond the Normal..!



**Premratan Shah Memorial Senior
Secondary Government Girl's School
and associated educational efforts by
RK Trust combine-**

- Innovative and design
- Community involvement
- Environmental care
- Inspiring educational space
- Technology forward methods
- Professional training
- Global Inputs
- Network of educators
- Assistance for career growth
- Inclusive environment
- Respect and dignity



This is a place where education is holistic and the students can thrive.

THE FUTURE

- English medium education
- Science and commerce streams
- Digital and audio/video classes
- Technology integration in teaching
 - Training of teachers
- Professional external guest teachers
 - Focussed vocational courses
- Community and adult education
- Civic sense and hygiene classes
- Competition preparation assistance
 - Merit based fee assistance
 - Scholarships and Grants
- Internships with organisations
 - Homework Help
- Extra curricular activities
 - Sports and Health



Moving
Towards a
New & Bright
Future..

R | K | T | R | U | S | T
E D U C A T E . E M P O W E R

[Write to us- Inshada@rkgroup.biz](mailto:Inshada@rkgroup.biz)

Reach us- +91 7006695439