



KALANDRI FOUNDATION

BUILDING A MODEL VILLAGE



KALANDRI, RAJASTHAN



WHY KALANDARI

India's villages are home to nearly **850 million people** over **65% of the country's population.**

Kalandri is one of them.

Here, most families depend on farming in one form or another.

The land provides, but it is also uncertain.

Rainfall is unpredictable, costs continue to rise, and income from agriculture rarely comes with assurance. **This uncertainty shapes everyday life here.** It affects how families plan, how children are educated, and how elders are cared for.

And these are the very farmers who feed us, yet they are often the first to be left behind or forgotten, when vulnerability sets in.

Still, when seen through the Foundation's lens, **Kalandri looks rich.**

Rich in potential: young minds, skilled hands, elders with wisdom, and a community that believes in collective progress. What it lacks is not intent, but resources and directed planning.



ABOUT US

Kalandari foundation is a grassroots level organisation that aims to deliver impact where India needs it most— at the rural level.

For development to be meaningful and inclusive, our work is designed to deliver real, measurable impact for the rural communities in and around Kalandri, Rajasthan.

We work on improving access to education, healthcare, livelihoods, wellness, social opportunity and dignity in everyday life for the people of this village.

We're working to build an example of sustainable progress rooted in tradition—a blueprint for future grassroots development, bringing together modern solutions, strengthened local entrepreneurship, and community well-being in harmony with the land.

With every initiative, Kalandari Foundation redefines what inclusive, resilient, and self-sustaining rural life can look like.

What we focus on here is channelising giving . Many of us believe in giving, but what we often miss is clarity, where our contribution goes, and how it transforms real lives. At Kalandri Foundation, **gifted resources are carefully converted into someone's asset.**

Every effort is planned around need or potential, carried out with full transparency, and rooted in what truly serves the community.

Our dedicated team of volunteers and experts has built trust and confidence over years of consistent, on-ground work with individuals, collectives, and local stakeholders in Kalandri.

And the deeper we go, the more potential we discover. In every grain of sand in this village lies an opportunity to create a meaningful difference.

If you find yourself believing in that possibility, there is always space here to contribute, participate, or give back in a way that feels right to you.

GIVE BETTER. GIVE SOONER.
GIVE MORE. GIVE INTENTIONALLY.

EDUCATION: MAKE A GIFT OF KNOWLEDGE



WHAT WE DO

In villages like Kalandri, education for girls often ends early.

Many drop out after Grade 8—to support household work, care for siblings, or due to social and cultural expectations that limit how far a girl is expected to go.

By educating a girl, you strengthen an entire ecosystem. One girl, one family, one community. This is why we believe that investing in a girl's education creates impact that endures far beyond the classroom.

Kalandri Foundation has adopted a senior secondary government girls' school, nearly 1000 students. The work includes constructing a new school building and providing complete ergonomic infrastructure, science laboratories, sports facilities, and essential learning resources. Beyond physical infrastructure, we focus on academic continuity and quality. This includes teacher training, additional academic staffing, and after-school tuition centres that currently support over 150 younger children.

For students who show promise and aspiration regardless of their caste, are provided with scholarships, mentoring, and coaching for higher education.

YOUR SUPPORT CAN MAKE A DIFFERENCE

Your involvement can take many forms—structured, specific, and aligned with what matters most to you.

1. **Enable modern learning** by supporting workshops on civic sense & etiquettes, exposure visits, skill-building programmes, internships, and extracurricular activities beyond the classroom.
2. **Set up scholarships** or grants for meritorious students, based on criteria you define.
3. **Sponsor tuition fees** for one or more students.
4. **Sponsoring Bridge Courses** for a second-chance education by enabling academic support for students who have not cleared a grade.
5. **Enable access beyond social boundaries** by supporting the education of girls from SC/ST and other marginalised backgrounds.

For every area you choose to support, the Foundation assists in identifying beneficiaries, implementing the initiative methodically, and reporting transparently on how resources are used.

Some contributions build classrooms.

Others keep a student in school for one more year.

Both matter.

SKILL DEVELOPMENT : MAKE A GIFT OF LIVELIHOOD

WHAT WE DO

Our village are dense with people and with potential. Many have the willingness to work and the discipline to learn.

We have begun with small, practical steps.

Embroidery classes for women have seen strong participation. Skills learned are translating into daily earnings, independence.

MAKE A DIFFERENCE

1. **Sponsor skill training** for individuals or small groups, enabling structured learning and continued practice.
2. **Contribute essential equipment** such as sewing machines or tools that allow skills to be put to use beyond the classroom.
3. **Offer mentorship** or **pro-bono guidance** in areas such as business basics, techniques & designs.

Each form of support strengthens the same outcome & that matters.

HEALTH & MEDICAL SUPPORT: MAKE A GIFT OF HEALING

WHAT WE DO

In villages chronic conditions go untreated & care remains out of reach.

Access to proper medical facilities is limited, and timely help often arrives too late.

For those without a steady income or without a breadwinner, children are undernourished,

Your contribution helps change that.

It supports genuine medical care, nourishment for the undernourished, and sustained health support for someone who desperately needs it.



MAKE A DIFFERENCE

1. Provide daily **food essentials** by supporting **ration kits** ensuring nutrition is not compromised during periods of illness or recovery.
2. **Cover the cost of specialised care** for individuals with specific needs.
3. If you are a medical professional you can **volunteer time or expertise** to deliver healthcare solutions on the ground.
4. **Provide infrastructural or equipment support**, including diagnostic tools, treatment equipment, or essential medical consumables.

Some support prevents illness.

Some restores health.

All of it matters.

OLD AGE SUPPORT: MAKE A GIFT OF DIGNITY

WHAT WE DO

In villages, young or youths leave their elderly parents in hunt of something greater and bigger.

Work pulls them to distant towns and cities, and parents are often abandoned over time.

While they struggle with failing knees, weakened eyesight, or severe spinal conditions that make even daily movement difficult.

Kalandri Foundation supports them with daily daily essentials, health assistance, and hands-on care. Responding to what is needed, when it is needed.

The intent is simple: None of us can escape time and that old-age is inevitable and each human deserves to arrive there with dignity.

MAKE A DIFFERENCE

1. **Support medical care** by sponsoring medicines, mobility aids, or follow-up care for chronic conditions.
2. **Enable on-ground care** by supporting the Foundation's field staff to be equipped when push comes to shove.

A cared for old age matters.



JEEV DAYA: MAKE A GIFT OF COMPASSION

WHAT WE DO

In and around Kalandri, animals and birds like Dogs, camel, peacocks are part of everyday life. When they are hurt or fall ill, there is no local veterinary facility to turn to. Alongside this is a growing concern: the unchecked increase in the stray dog population.

Your contribution helps bridge these gaps. It supports access to veterinary treatment, population control through sterilisation.



MAKE A DIFFERENCE

1. **Support veterinary care** by sponsoring medical treatment, emergency response, or follow-up care for injured or ill animals.
2. **Enable preventive care** by supporting dog sterilisation programmes and basic animal health initiatives that help maintain balance within the village ecosystem.

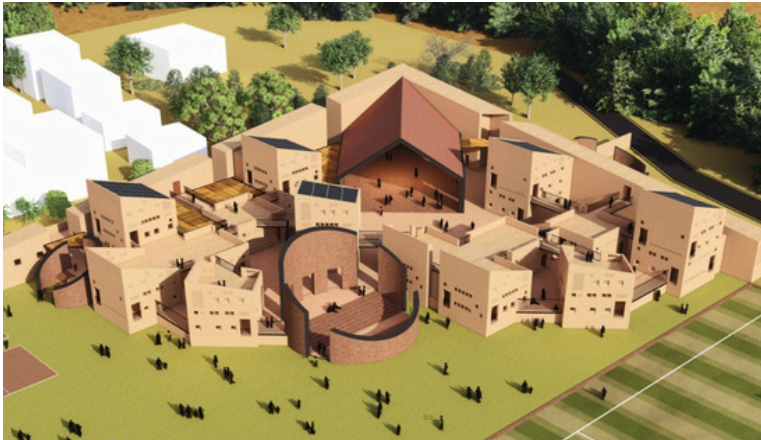
All Creatures Matter.

SOME OF OUR INITIATIVES

PREM RATAN SHAH MEMORIAL GIRLS SCHOOL

Named in honor of Sri Prem Chand and Ratan Bai, the school aims to embody a commitment to academic excellence and holistic development.

From its completion planned in 2026, this school will be pivotal for the larger initiative as a beacon of learning in Kalandri and nearby areas by making best in class learning facilities accessible to the local students.



HIKVAARI GAADI



An immersive community education project, this is an extension of the school project making learning fun and accessible beyond the school campus.

OTHER INITIATIVES



Free Healthcare
Camps



Vocational Training for
Women



Market Smart Solutions for
Agricultural Produce



Sports Training and
Scholarship Program



UPSC Aspirants coaching



Cow Cafe: free fodder,
water and shelter for animals

JOIN US

At Kalandri Foundation, we work on the ground and stay accountable. Every contribution is used with intent, documented with clarity, and shared with you transparently. Whether it supports a child's education, respond to a medical emergency, or an urgent need that cannot wait. You would be kept informed where your support goes, and why it mattered.

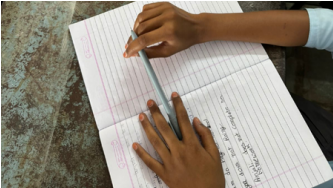
In education, we take one step ahead. We share profiles of deserving girls after thorough assessment, and you choose whom you wish to support. Making this experience filled with joy and responsibility.

And if you happen to have anything in your mind beyond what is mentioned above. We are more than open to broaden our horizons to exploring into your idea of giving. Please feel free and share it with us by reaching out to us & its most likely we find a way to channelise it.

Our work requires scale and continuity. To sustain this, we work with a minimum contribution of ₹1,00,000 so support leads to lasting outcomes, not just a momentary relief.

Our motto is simple: Share what you've been given.

And if you find yourself reflecting and lingering around the thought, consider it an invitation to join us.



For queries and details on how to engage with us

[CONNECT WITH US](#)

Krishna +91 98867 44586

krishna_rkf@rkgroup.biz



Ekta and Kiran, two of the toppers from the government girls school in Kalandri, have moved to Bangalore to pursue higher education as part of an initiative to support and sponsor meritorious students.

R | K | T | R | U | S | T